



Meet the Teacher

Mrs Watterson

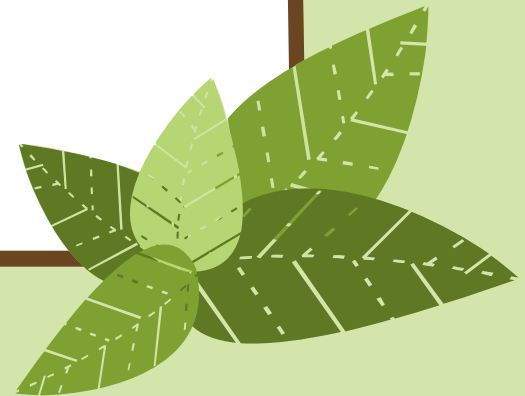
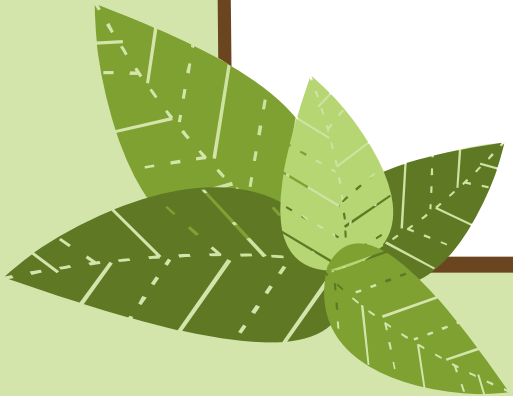
Who works in our classroom?

Mrs Watterson, class teacher (Monday – Friday).

Mrs McNeill, (Literacy groups Monday, Tuesday, Thursday, Friday, working in class for writing on a Wednesday AM).

Mrs Longmuir (gym & RME, Monday PM, literacy & numeracy groups Monday- Wednesday).

Mr Law Literacy groups (Monday, Tuesday & Thursday).



Our Daily Routine

8:50am	Lunches, register and morning starter task
10.30- 10.45	Break time
12.30- 13.10	Lunch time
14.50pm	Home time



Promoting Positive Behaviour at Park View

We encourage positive relationships with all children to promote positive behaviour.

Our focus is on our school values and what behaviours we want to see our pupils demonstrating in class and around the school.

We use a variety of approaches including positive praise and feedback, stickers, personal points and certificates during whole school assemblies for demonstrating our school values.

Polite

Ambitious

Responsible

Kind

What are we learning?

Spelling : The spelling programme will cover a range of phonemes (sounds). For some groups the phoneme will be covered over a two week period and for other this will change weekly.

The following weeks the children will have a range of common words and spelling rules. The children will be tested on these words at the end of each week.

Reading We will work on a book within class and an individual reading book will also be sent home for homework to reinforce learning.

Writing: Our focus this term is to include ellipsis, exclamation marks, repetition, short sentences in our writing as well as focusing on creating detailed descriptions of characters and settings.

Numeracy & Maths We are learning to read, write, round and order larger numbers. We will also be adding larger numbers later in the term. We also have a money focus this term and will be learning to make larger amounts and calculate change.

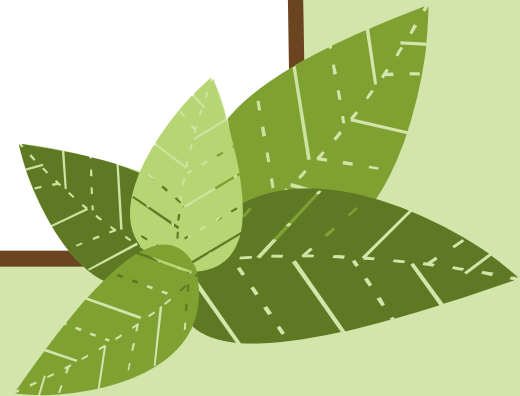
IDL We are currently exploring expressive arts and are investigating collage. We have explored the works of Henri Matisse and, inspired by this, we created a piece of snail art. We now want to explore other famous collage artists and their work, we will create a powerpoint on this and discuss our findings with the class.

Homework

- Homework will be handed out on a Monday morning and should be submitted by Thursday morning. For now this will be handed out as sheets but may change later in the year.

Each week you can expect...

- Spelling words to learn for a test on Friday
- A maths activity to consolidate learning in class
- A reading book.



Some suggestions to support your child's learning...

- Ask your child
 - what they learned today, what they did really well and what they found challenging
- Have pens, pencils, paper and books available at home
- Play games with counters, dice or playing cards
- Regularly ask your child to tell the time on an analogue clock. How long is it until bedtime? Talk about days of the week, months, years, seasons. How many days are in March etc?
- Read with your child. Don't assume because they can read themselves that they will not enjoy sharing a more challenging story with you.
- Help your child become more independent
 - * Can they dress themselves, brush their teeth, tie up their own hair
 - * Can they do zips, buckles and tie shoe laces and their school tie? Let them make their packed lunch and tidy their belongings. These are life skills.

Finally, please encourage your child to use kind and respectful language and display good manners at all times.

Other things to remember

Lunches/ milk

School lunches are paid for on Parentpay. Menus were sent home and are also displayed in class. Office staff can help you to register for free school meals if you are entitled to them.

Communication

All parent communication should be through the official channels (school office: phone or email). For picture updates you can follow our school twitter @ParkViewUpdate

PE

Our PE day is a Monday afternoon. Please make sure your child brings their PE kit.

Changes

If there are any changes in your child's circumstances, home life or health that you feel we should be made aware of, please contact the school office.
(glasses, hearing tests, bereavement etc)